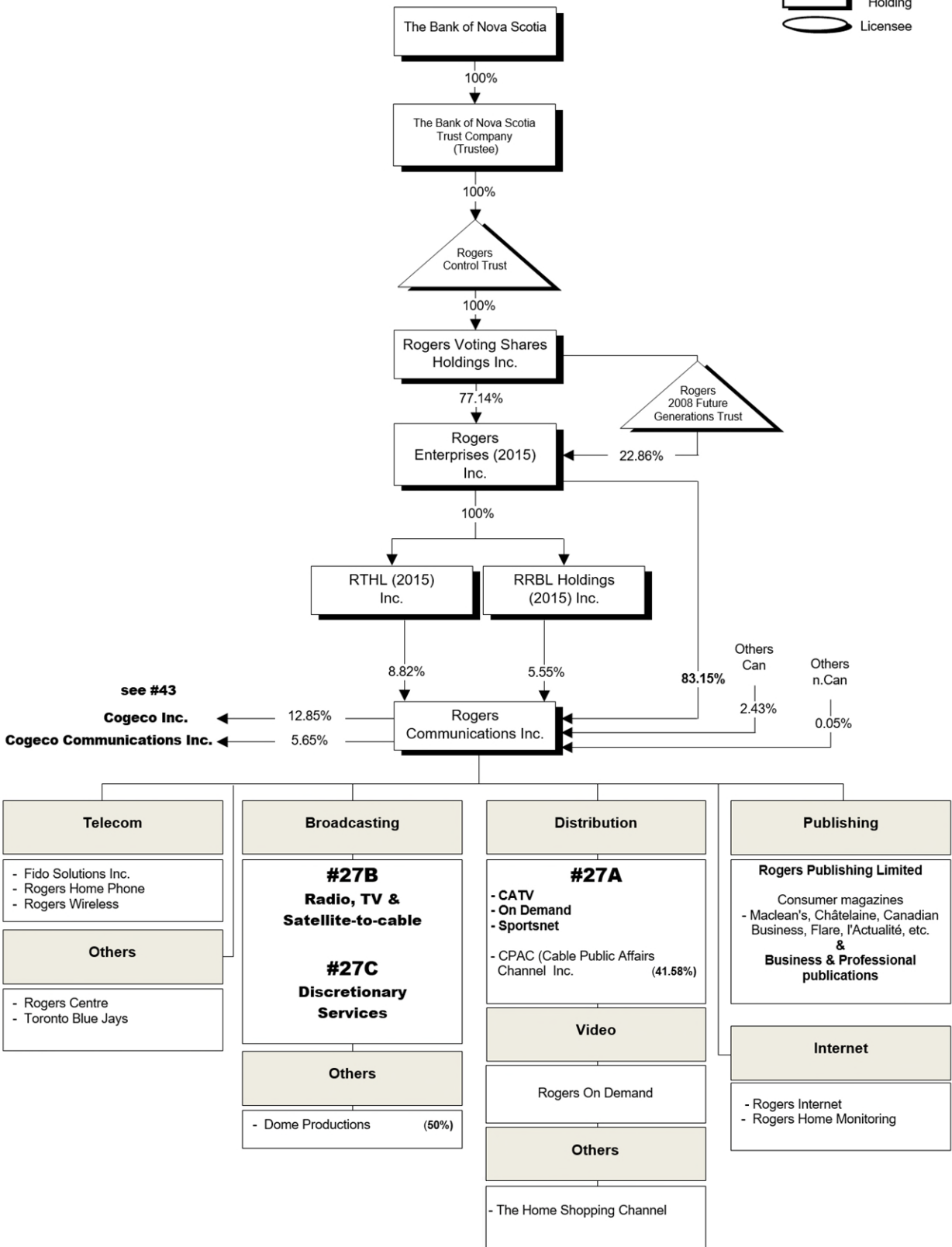


# ROGERS Corporate Structure

The percentages refer to voting rights only



## **UPDATE**

**Amalgamation** – 2016-01-01 – of Rogers Enterprises ULC (formerly Rogers Entreprises Inc.), RRBL Holdings Inc., RTHL Inc., Rogers Equity Investments Inc. and 7 others to continue as RPC Amalco ULC.

**Update** – 2016-03-14 - wind up of RPC Amalco ULC into Rogers Enterprises (2015) Inc.

**Update** – 2017-03-14 – of Rogers Communications Inc.'s shareholding as per information supplied in the 2017 Broadcasting Ownership Information Annual Filing process.

**Update** – 2017-10-19 – of types of services.

**Update** – 2017-04-03 – of Rogers Communications Inc.'s shareholding as per information supplied in the 2018 Broadcasting Ownership Information Annual Filing process.

**Update** – 2019-05-29 – of Rogers Communications Inc.'s shareholding as per information submitted in the 2019 Data Collection System.

**Update** – 2020-07-03 – minor change.

**Update** – 2021-02-12 – of Rogers Communications Inc.'s shareholding as per information submitted in the 2020 Data Collection System.

**Update** – 2021-10-15 – minor changes.

**Update** – 2021-11-03 – minor changes.

## **SEE ALSO**

27A, 27B and 27C

## **NOTICE**

The CRTC ownership charts reflect the transactions approved by the Commission and are based on information supplied by licensees. The CRTC does not assume any responsibility for discrepancies between its charts and data from outside sources or for errors or omissions which they may contain.

## APPENDIX

Notes: The percentages in this chart refer to voting rights only.

Rogers Communications Inc. is ultimately owned by Rogers Control Trust, the details of which are as follows;

Rogers Communications Inc. is directly held:

83.15% by Rogers Enterprises (2015) Inc.  
8.82% by RTHL (2015) Inc. which is 100% held by Rogers Enterprises (2015) Inc.  
5.55% by RRBL Holdings (2015) Inc. which is 100% held by Rogers Enterprises (2015) Inc.  
2.43% by the other Canadian shareholders and  
0.05% by the non-Canadian shareholders

Rogers Enterprises (2015) Inc. is 77.14% held by Rogers Voting Shares Holdings Inc. and 22.86% by Rogers 2008 Future General Trust.

Rogers Voting Shares Holdings Inc. is 100% held by Rogers Control Trust.

Rogers Control Trust is 100% held by the trustee The Bank of Nova Scotia Trust Company, which in turn is 100% held by the Bank of Nova Scotia.

Rogers Communications Inc. holds 12.85% in Cogeco inc. and 5.65% in Cogeco Communications Inc. (see chart 43)

**NOTE:** The chart then describes what can be found on the other Rogers charts, and provides an overview of Rogers other holdings, such as:

### Chart 27A

Rogers distribution, Rogers on demand & Sportsnet undertakings  
Rogers 41.58% interest in Cable Public Affairs Channel Inc. (CPAC)

### Chart 27B

Rogers Radio, TV and Satellite-to-cable

### Chart 27C

Rogers Discretionary Services

### Overview of Rogers Telecom and other, such as:

Dome Productions (50%)  
Fido Solutions Inc.  
Rogers Home Shopping Channel  
Rogers Home Phone service  
Rogers Wireless services  
Rogers Publishing (such as Maclean's, Chatelaine, Canadian Business, etc)  
Rogers Internet and Rogers Home Monitoring  
Toronto Blue Jays  
Rogers Centre